

Disc brake

Technical data and dimensions

**Caliper SH32**

Emergency brake  
Fail safe  
Spring application  
Hydraulic release  
Opening proving switches  
Lining wear indicator wires

**Operating conditions:**

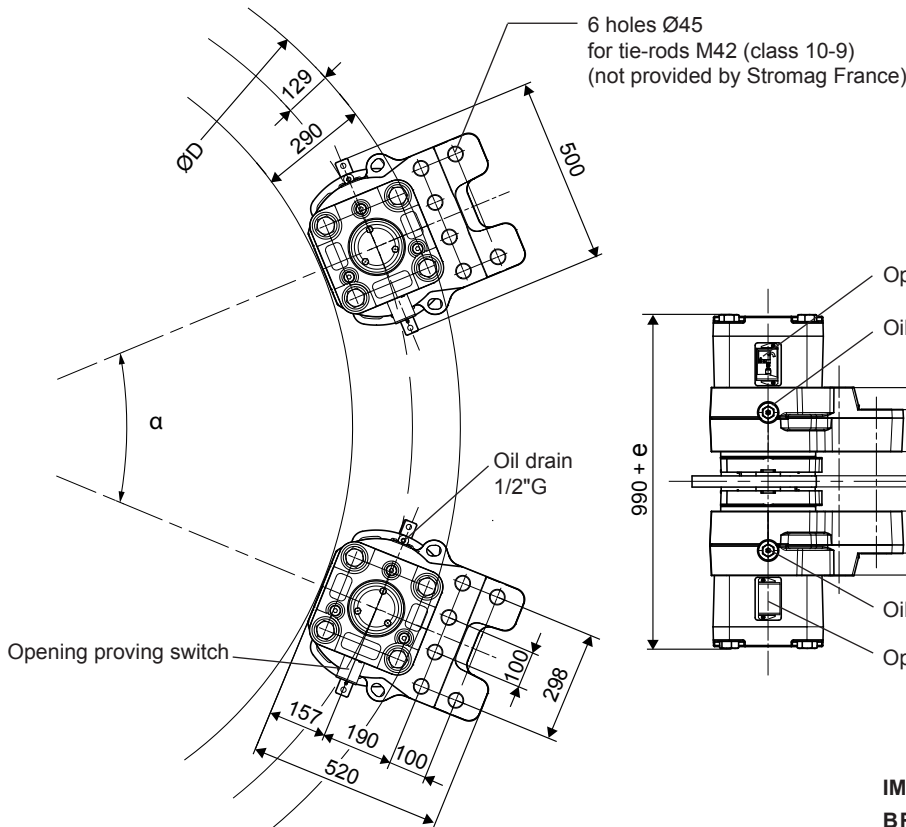
- Ambient temperature: -10°C to +60°C
- Relative humidity: ≤ 70%
- Dust in atmosphere ≥ 65µ
- Other conditions: consult us.

**Use:**

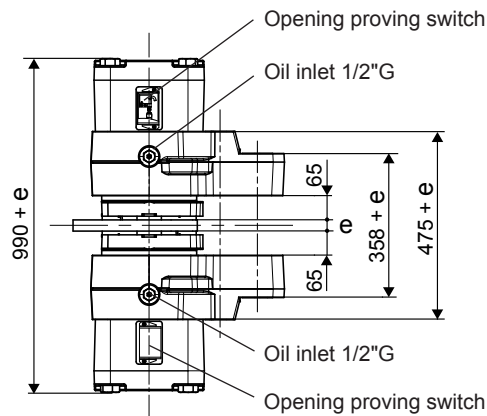
- The brake should be applied only in case of emergency stop, overspeed or shutdown of electric mains. Other use, consult us.

**Options:**

- Lining wear proving switches
- Progressive braking system
- Marine protection



Disc ØD	1000	1500	2000	2500	3000
α	≥ 95°	≥ 70°	≥ 53°	≥ 45°	≥ 38°



Standard disc thickness :  
30 ≤ e ≤ 50 mm.  
Other thickness, consult us.  
Dimensions in mm

**IMPORTANT**

**BRAKING FORCE** and **TORQUE** values correspond to lining quality **US2-1** and disc steel S235JR or S355JR (standard NF EN10025), these values are subject to a variation of ±10%.  
Response time at nominal torque ≤ 0.3s

Weight : 600 kg

**Electrical data:**

Opening proving switches  
Wear proving switches (optional) :  
250VAC maxi., 5A maxi.,  
with interrupting capacity: 50VA maxi.  
220VDC maxi., 5A maxi.,  
with interrupting capacity: 50W maxi.

Compatible with PLC (Programmable Logic Controllers).  
An opening switch used with other equipment than PLC must not be reused with a PLC.

<b>Designation</b>	<b>Caliper</b>	<b>SH32</b>	
	<b>Lining</b>	<b>US2-1</b>	
<b>BRAKING FORCE BF</b> for air gap disc/lining of 2 x 1,5 mm	<b>Dynamic N</b>	<b>333 800</b>	
	<b>Static N</b>	300 000	
<b>BRAKING FORCE BF</b> for air gap disc/lining of 2 x 2 mm	<b>Dynamic N</b>	<b>320 000</b>	
	<b>Static N</b>	288 000	
Linear speed of the disc	m/s	≤ 10	
<b>DYNAMIC BRAKING TORQUE BT</b> for 1 caliper and disc ØD (mm)	N.m	BT = BF (D/2000 - 0.129)	
Regulation pressure	minimum	bar	180
	maximum	bar	200
Setting pressure limit valve of hydraulic unit	bar	225	
Total volume of oil displaced for air gap disc/lining of 2 x 2 mm	cm <sup>3</sup>	191 for one stroke disc/lining	

Due to continuous development and improvement, all dimensions and characteristics are subject to change without notice.

Installation and maintenance  
Spare parts

Leaflet No. M10040-01  
No. S10040-01

15/06/12

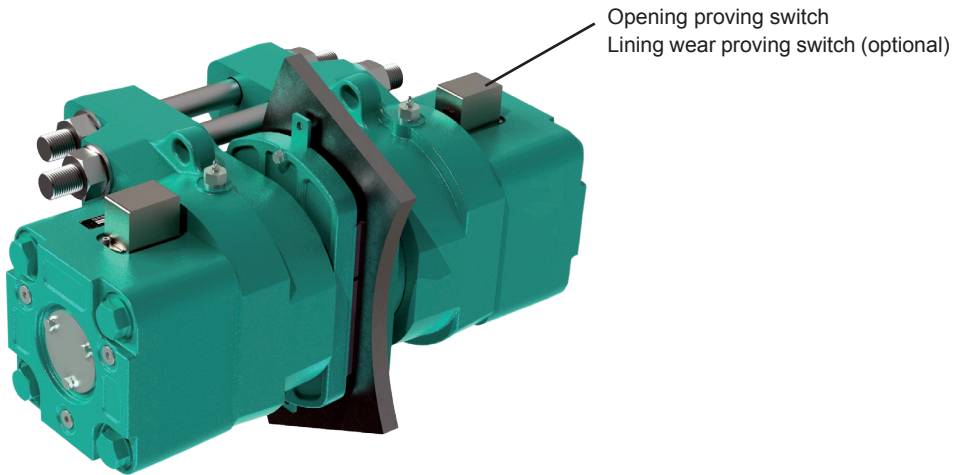
1/2

**T10040-01-C**

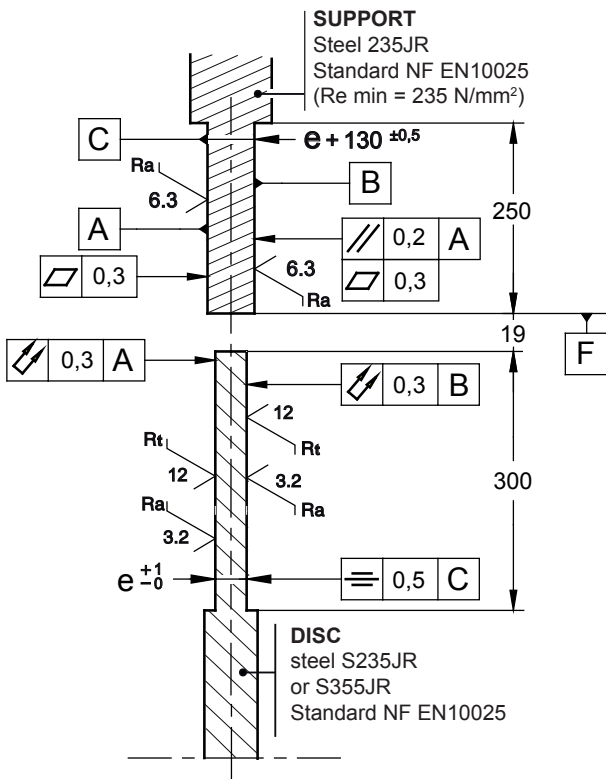
Disc brake

Technical data and dimensions

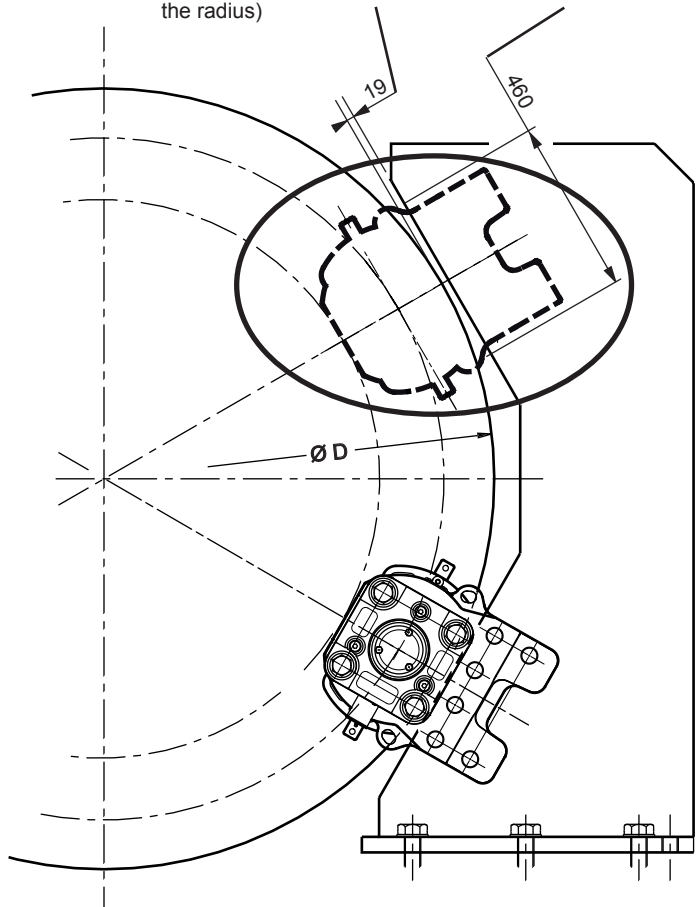
**Caliper SH32**  
Installation instructions



Dimension at the closest point (perpendicular on the radius)  
The support F face **must be** rectilinear on this length



Standard disc thickness:  $30 \leq e \leq 50$  mm.  
Other thickness, consult us.  
Dimensions in mm.



Due to continuous development and improvement, all dimensions and characteristics are subject to change without notice.

Installation and maintenance  
Spare parts

Leaflet No. M10040-01  
No. S10040-01

15/06/12

2/2

**T10040-01-C**