

Disc brakes

Technical datas and dimensions

Calipers 5K and 5KR

Fail safe braking
 Spring application
 Electromagnetic release
 Automatic wear compensation
 Detection of full lining wear
 Opening proving switch
 Association with discs th. 30mm (or 15mm in option)
 With coil supply wire: $2 \times 2\text{mm}^2$, length 2m

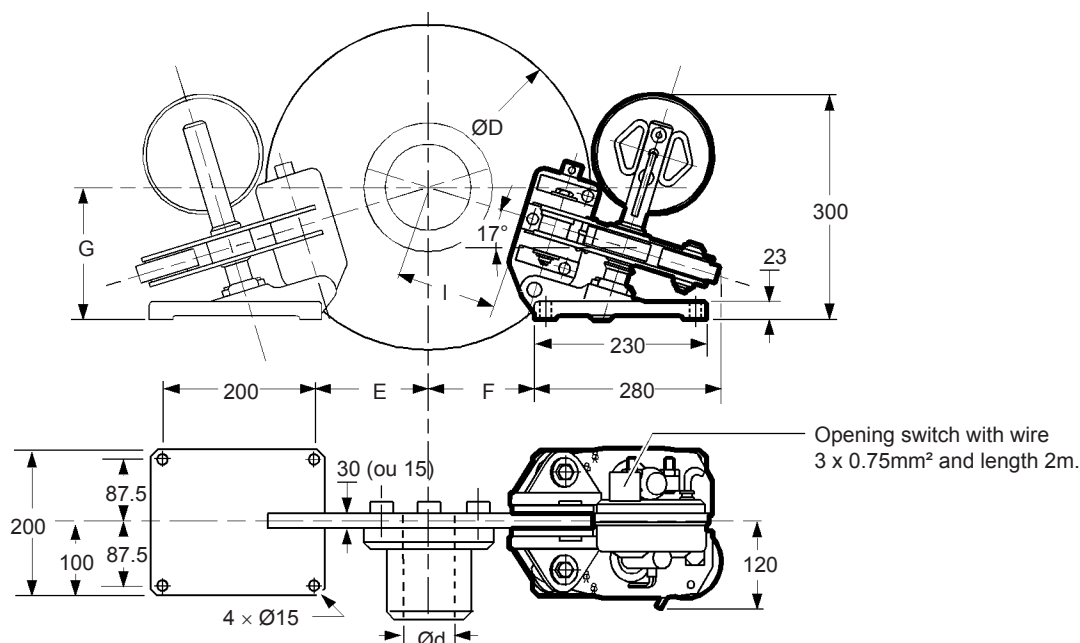
Conditions of use:

- Ambient temperature - 10°C to $+60^\circ\text{C}$
- Relative humidity $\leq 70\%$
- Dust in atmosphere $\geq 65\ \mu$

Other conditions, consult us.

Options:

- Lowering system with lever
- Hydraulic lowering system
- Marine protection
- Vertical mounting
- Reduced torque
- Closing proving switch
- Manual release switch
- Association with discs th. 15mm



Weight: 27 kg

Response time at nominal torque : see the leaflet of the associated electrical power supply.

| Discs | | | 315 | 355 | 395 | 445 | 495 | 550 | 625 |
|--|-------------------------|--------|--------------|------|------|------|-------|-------|-------|
| Maximum speed of the disc for nominal torque | | rpm | 3000 | 2700 | 2400 | 2100 | 1900 | 1800 | 1500 |
| D | mm | | 315 | 355 | 395 | 445 | 495 | 550 | 625 |
| d | mm | | 0-50 | 0-60 | 0-70 | 0-70 | 0-100 | 0-100 | 0-100 |
| E | mm | | 100 | 120 | 140 | 160 | 190 | 220 | 255 |
| F | mm | | 85 | 105 | 125 | 145 | 175 | 205 | 240 |
| G | mm | | 160 | 164 | 170 | 180 | 185 | 195 | 205 |
| I (approx. dimension) | | mm | 72 | 92 | 113 | 135 | 160 | 197 | 233 |
| Caliper 5K : | | | | | | | | | |
| Nominal torque for 1 caliper adjustable from - 50% to +20% | | N.m. | 190 | 220 | 260 | 300 | 350 | 390 | 460 |
| Maximum reaction on shaft | 1 caliper 2 calipers | N N | 1950 1150 | | | | | | |
| Caliper 5KR : | | | | | | | | | |
| Nominal torque for 1 caliper adjustable from 100% to -50% | | N.m. | 95 | 110 | 130 | 150 | 175 | 195 | 230 |
| Maximum reaction on shaft | 1 caliper 2 calipers | N N | 815 480 | | | | | | |

Technical data :

Opening proving switch :

250VAC maxi., 5A maxi., with interrupting capacity : 50VA maxi.
 220VDC maxi., 5A maxi., with interrupting capacity : 50W maxi.

Compatible with PLC (Programmable Logic Controllers).
 An opening switch used with other equipment than PLC must not be reused with a PLC.

Due to continuous development and improvement, all dimensions and characteristics are subject to change without notice.

| | | | | | |
|------------------------------|----------|---------------|---------------------|--|---------------|
| Discs | Leaflets | No. T02220-01 | Options | Leaflet | No. A08200-01 |
| Drawings | | No. G06400-01 | Power supplies AC64 | No. T04500-01, T04560-01, T04510-01, T04500-02 | |
| Installation and maintenance | | No. M08200-01 | Power supplies DC64 | No. T04530-01, T04540-01 | |
| Spare parts | | No. S09200-01 | | | |

09/04/18

T03350-01-E