

Disc brake

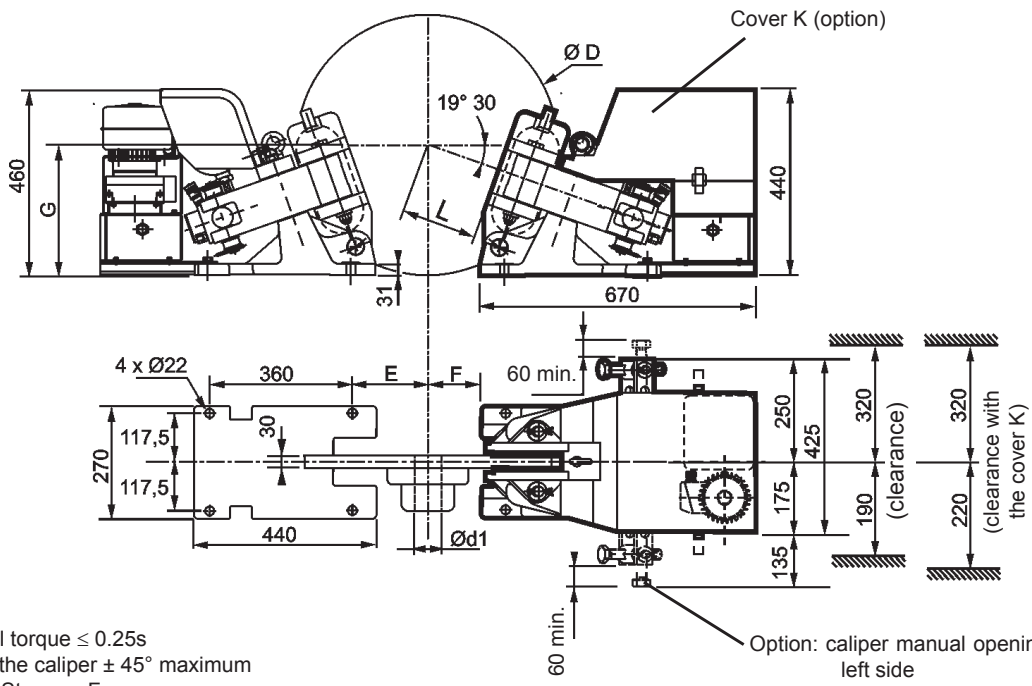
Technical data and dimensions

Calipers 2TB, 3TB and 4TB

- Fail safe
- Braking by HYDROSPRING® system
- Electrico-hydraulically released
- Integral hydraulic power unit
- Self contained electrical system
- Lining wear compensation
- Opening proving switch

- Operating conditions:**
- Ambient temperature : -10°C to +50°C
 - Relative humidity ≤ 70%
 - Dust in atmosphere ≥ 65µ
- Other conditions, consult Stromag France.

- Options:**
- Torque setting
 - Detection of full lining wear
 - Adjustable delay brake closing system from 0.25 to 20secs
 - Controlled braking torque ***
 - Marine protection
 - Stepped braking torque ***
 - Redundant circuit with 2 solenoid valves
 - Protective cover K



Weight: 160 kg
 Response time at nominal torque ≤ 0.25s
 Permissible inclination of the caliper ± 45° maximum
 Other mountings: consult Stromag France.

Option: caliper manual opening on left side

Discs			445	495	550	625	705	795	995
Nominal torque for 1 caliper:	2TB	N.m	2800	3250	3700	4400	5100	5900	7800
	3TB	N.m	1550	1800	2050	2450	2850	3250	4300
	4TB	N.m	775	900	1030	1230	1430	1630	2150
Maximum disc speed for nominal torque **		tr/mn	2100	1900	1800	1500	1300	1200	900
D		mm	445	495	550	625	705	795	995
E		mm	100	120	150	185	225	265	365
F		mm	40	60	90	125	165	205	305
G		mm	285	295	305	315	330	345	380
L		mm	90	130	145	180	225	265	370
d1 min. keyed for 1 caliper (steel St 70):	2TB	mm	73	75	77	80	82	87	92
	3TB	mm	60	62	63	66	67	71	76
	4TB	mm	48	49	50	52	53	57	58
d1 min. keyed for 2 calipers (steel St 70):	2TB	mm	79	83	87	92	96	101	110
	3TB	mm	65	68	71	75	79	82	91
	4TB	mm	53	55	57	60	63	66	69
Maximum reaction on shaft *:	2TB	N	18000						
	3TB	N	10000						
	4TB	N	5000						

Electric data:

- Power unit motor: 3 phases: 230/400 V ±10%, 50 Hz, 0.37 kW, 4 poles for mains: 230/400 V 50 Hz or 415 V 50 Hz or 460 V 60 Hz
- Options motor: 400/690 V ±10% 50Hz 255/440 V ±10% 50Hz 290/500 V ±10% 50Hz 280/480 V ±10% 60Hz 330/575 V ±10% 60Hz
- Other voltages, consult us.
- Electrical casing IP55
- Opening switch: 240 V, 3 A 10 VA AC 250 V, 0.3 A 10 W DC

* Mounting with 2 calipers, multiply by 0.6
 ** For higher speeds, consult Stromag France.
 *** Increased dimensions, consult us.

Due to continuous development and improvement, all dimensions and characteristics are subject to change without notice.

Installation and maintenance	Leaflet No. M08264-01	24/08/12
Spare parts	No. S09264-01	
		T03664-01-C