

Disc brake

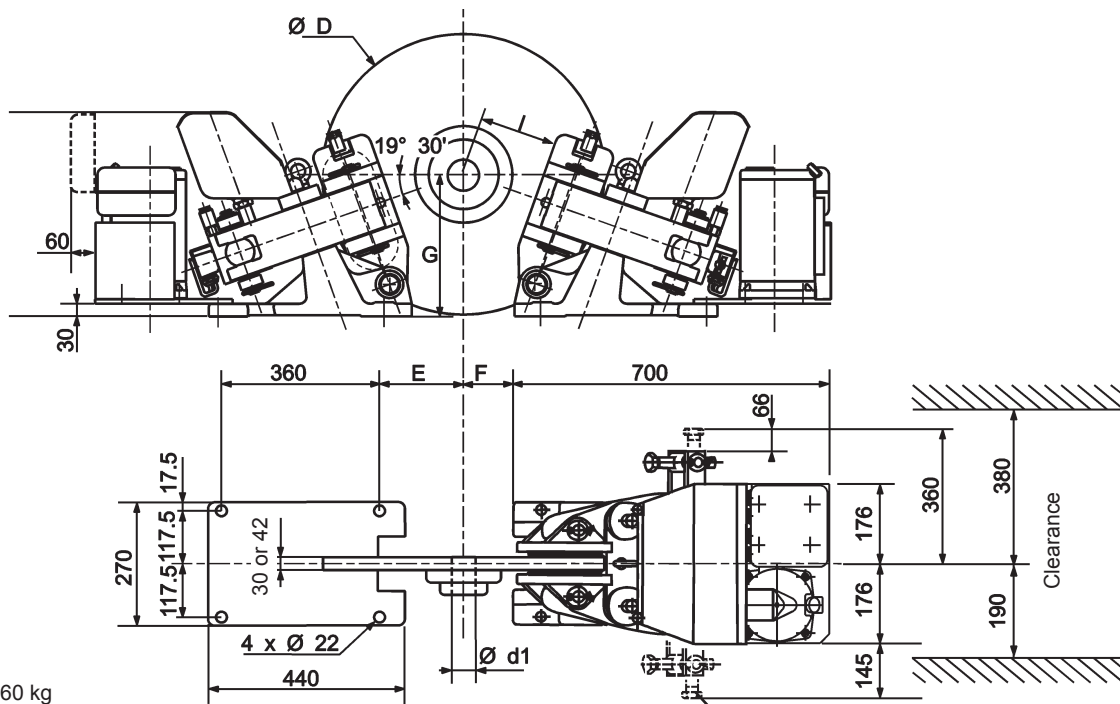
Technical data and dimensions

Calipers 1TSA and 1TXA

Fail safe  
 Braking by HYDROSPRING® system  
 Electro-hydraulically released  
 Integral hydraulic power unit  
 Self contained electrical system  
 Lining wear compensation  
 Opening proving switch  
 Torque setting

- Operating conditions :**
- Ambient temperature : -10° C to +50° C
  - Relative humidity ≤ 70%
  - Dust in atmosphere ≥ 65µ
  - Other conditions, consult us.
- **1TXA:** Mounting of 2 calipers per disc, consult us.

- Options:**
- Linings with wear detection
  - Adjustable delay brake closing system from 0.25 to 20 sec.
  - Switch for PLC
  - Marine protection



Weight: 160 kg  
 Response time at nominal torque ≤ 0.25 sec.  
 Caliper inclination referring to horizontal ± 15° maximum  
 Other inclination, consult us.

Optional left hand release

Disc Thickness	mm	625		705	795		995
		30	42	30	30	42	42
Nominal torque for 1 caliper:		1TSA		1TSA	1TSA		1TSA
	N.m	7920		9180	10620		14040
	N.m	9780		11300	13100		17300
Disc speed for the nominal torque *	r.p.m.	≤ 1500		≤ 1300	≤ 1200		≤ 900
D	mm	625		705	795		995
E	mm	185		225	265		365
F	mm	125		165	205		305
G	mm	315		330	345		380
I	mm	180		225	265		370
<b>1TSA:</b>							
Ø d <sub>1</sub> min. for:	mm	1 caliper (1 key) **		100	111	111	130
	mm	2 calipers (2 keys) **		—	—	135	170
<b>1TXA:</b>							
Ø d <sub>1</sub> min. for:	mm	1 caliper (1 key)		111	125	125	145
	mm	1 caliper (shrink fit)		107	110	110	118
Maximum reaction on shaft:	N	1TSA ***		32400			
	N	1TXA		40000			

- Electric data :**
- 3 phases AC supply
  - Voltages :
 

230 V / 400 V ±10%	50 Hz
415 V ±5%	
460 V ±5%	60 Hz
  - Maximum consumption: 775 W
  - Electrical casing: IP 55
  - DC supply, other voltages and conditions: consult us.
  - Opening proving switch:
 

240V, 3A 10VA AC
250V, 0.3A 10W DC

\* For higher speed, consult us.      \*\* or shrink fit      \*\*\* Mounting with 2 calipers: multiply by 0.6

Due to continuous development and improvement, all dimensions and characteristics are subject to change without notice.

Installation and maintenance  
 Spare parts

Leaflet no M08271-01  
 no S09271-01

02/07

**T03681-01-A**