

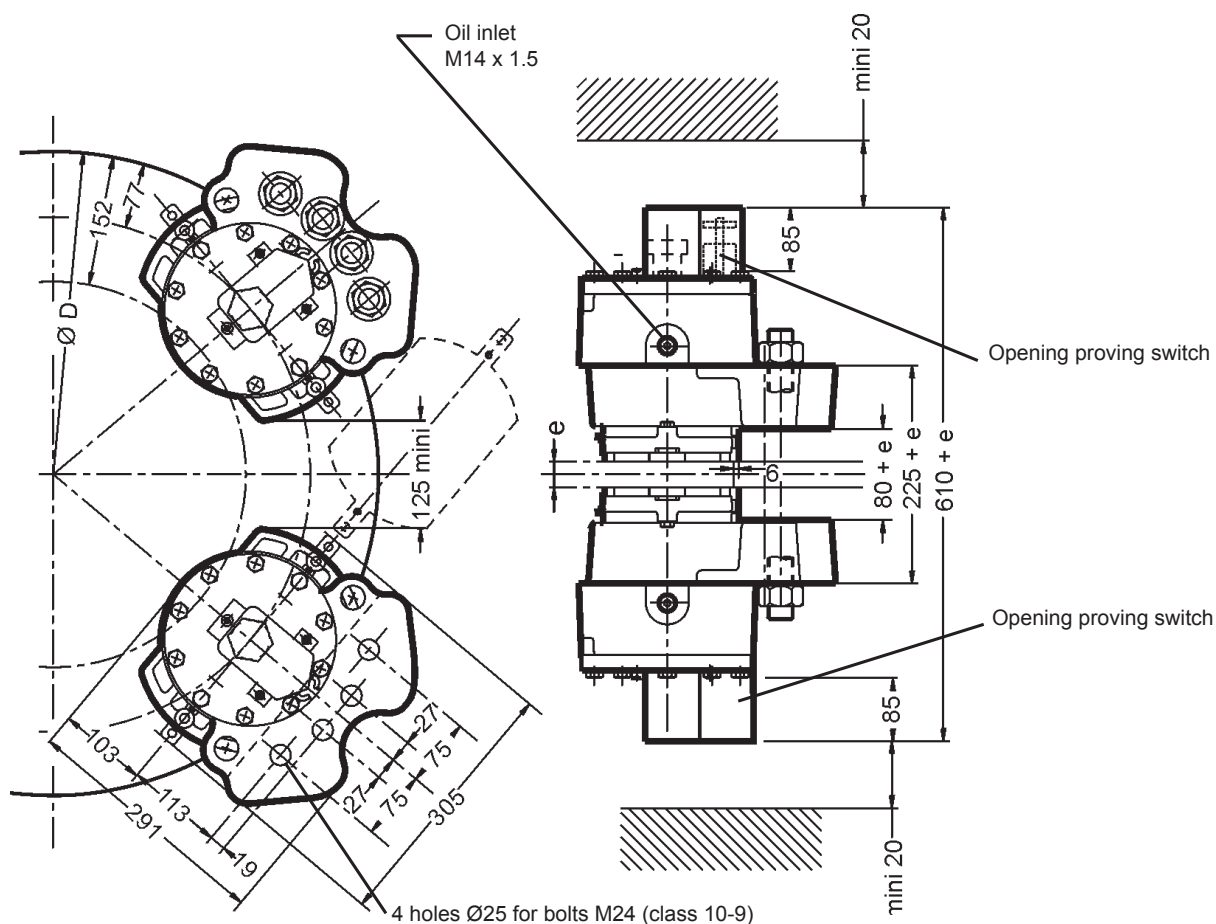
Technical data and dimensions

Options :

- Automatic lining wear compensation (WACS)
- Lining wear control switch
- Progressive braking system
- Marine protection
- Caliper on support with integral hydraulic power unit

- The brake should be applied only in case of emergency stop, overspeed or shutdown of electric mains.

Other use, consult us.



Installation and maintenance	Leaflets	n° M08410-01
Spare parts		n° S09410-01
Connection of a hydraulic power unit		n° G08555-01

 $\frac{1}{3}$

T03865-02-C

Disc brake

Technical data and dimensions

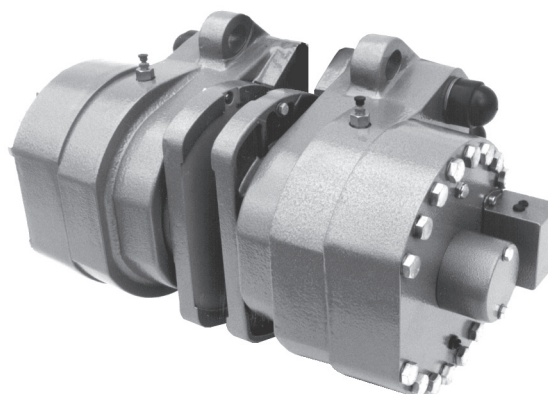
Caliper SH5

Opening proving switch :

250VAC maxi., 5A maxi.,
with interrupting capacity: 50VA maxi.

220VDC maxi., 5A maxi.,
with interrupting capacity: 50W maxi.

Compatible with PLC
(Programmable Logic Controllers).
An opening switch used with other equipment than PLC
must not be reused with a PLC.



Weight: 110kg

Torque and effort values are subject to a variation of $\pm 10\%$

Response time at nominal torque : see the leaflet
"Connection of a hydraulic power unit" quoted below

Désignation	caliper		SH5-6		SH5-5		SH5-4		SH5-3		SH5-2	
	Lining *		US2-1	WS1-3	US2-1	WS1-3	US2-1	WS1-3	US2-1	WS1-3	US2-1	WS1-3
Braking force BF for 1mm of air gap disc/lining	Static	N	63 000	43 200	51 300	35 100	37 800	25 900	21 200	14 500	9 600	6 500
	Dynamic	N	70 000	48 000	57 000	39 100	42 000	28 800	23 600	16 200	10 700	7 300
Linear speed of the disc	m/s		≤ 10	≤ 50	≤ 10	≤ 50	≤ 10	≤ 50	≤ 10	≤ 50	≤ 10	≤ 50
Dynamic braking torque BT (N.m) for 1 caliper and disc ØD (mm)	995 mm	N.m	29430	20 180	23 960	16 440	17 660	12 110	9 920	6 810	4 490	3 070
	1200 mm	N.m	36610	25 100	29 810	20 440	21 960	15 060	12 340	8 470	5 590	3 810
	1500 mm	N.m	47110	32 300	38 360	26 310	28 260	19 380	15 880	10 900	7 200	4 910
	2000 mm	N.m	64610	44 300	52 610	36 080	38 760	26 580	21 780	14 950	9 870	6 730
BT for other ØD (mm)	N.m		BT = BF (D/2000 - 0.077)									
Regulation pressure	minimum	bar	180		140		110		85		40	
	maximum	bar	200		160		140		115		60	
Setting pressure of the limit valve of hydraulic power unit	bar		210		190		165		140		80	
Total volume of oil displaced	cm ³		35 for one stroke disc/lining (nominal wear and opening)									

* **US2-1:** disc temperature during one braking $\leq 150^{\circ}\text{C}$

WS1-3: disc temperature during one braking $\leq 600^{\circ}\text{C}$

US2-5: disc temperature during one braking $\leq 350^{\circ}\text{C}$, optional, consult us.

Due to continuous development and improvement, all dimensions and characteristics are subject to change without notice.

Installation and maintenance Leaflets n° M08410-01
Spare parts n° S09410-01
Connection of a hydraulic power unit n° G08555-01

23/09/10 2/3

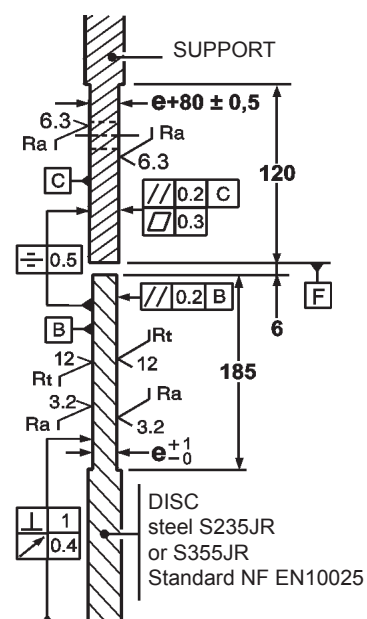
T03865-02-C

Disc brake

Technical data and dimensions

Disc and support for the caliper SH5

Installation instructions

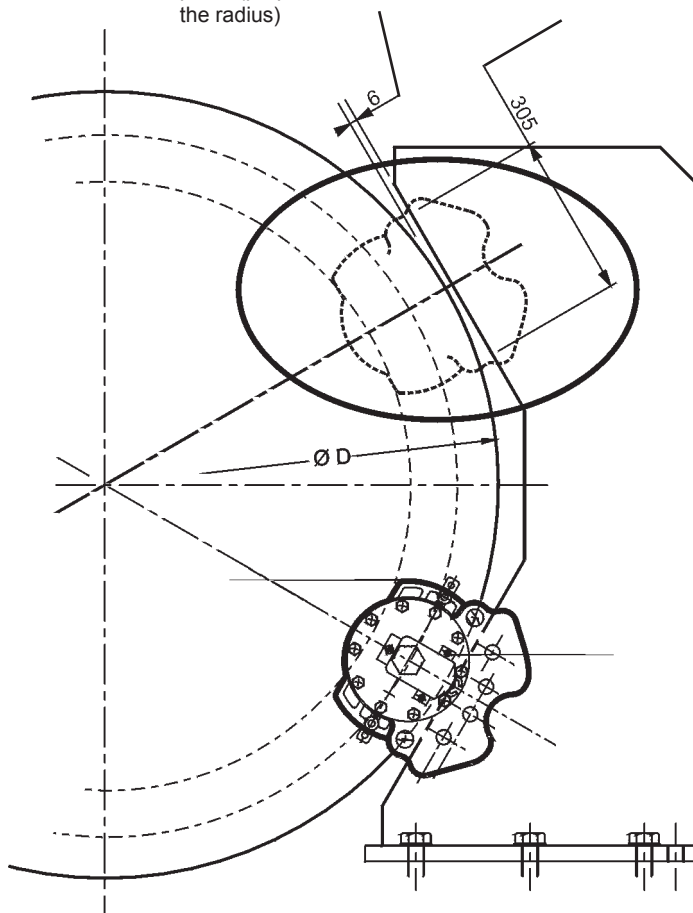


Dimensions in millimetre

Standard disc thickness: $30 \leq e \leq 50$ mm.
 Other thickness, consult us.

Dimension at the closest
point (perpendicular on
the radius)

The support F face **must be**
rectilinear on this length



Due to continuous development and improvement, all dimensions and characteristics are subject to change without notice.

Installation and maintenance Leaflets n° M08410-01
 Spare parts n° S09410-01
 Connection of a hydraulic power unit n° G08555-01

23/09/10 3/3

T03865-02-C