

Disc brake

Technical data and dimensions

Caliper SH15

Emergency brake
Fail safe
Spring application
Hydraulic release
Opening proving switches
Lining wear detector

Operating conditions:

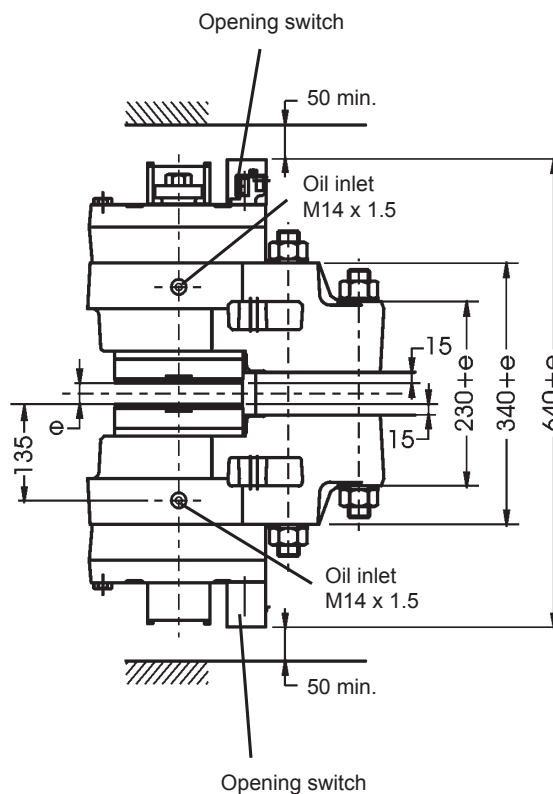
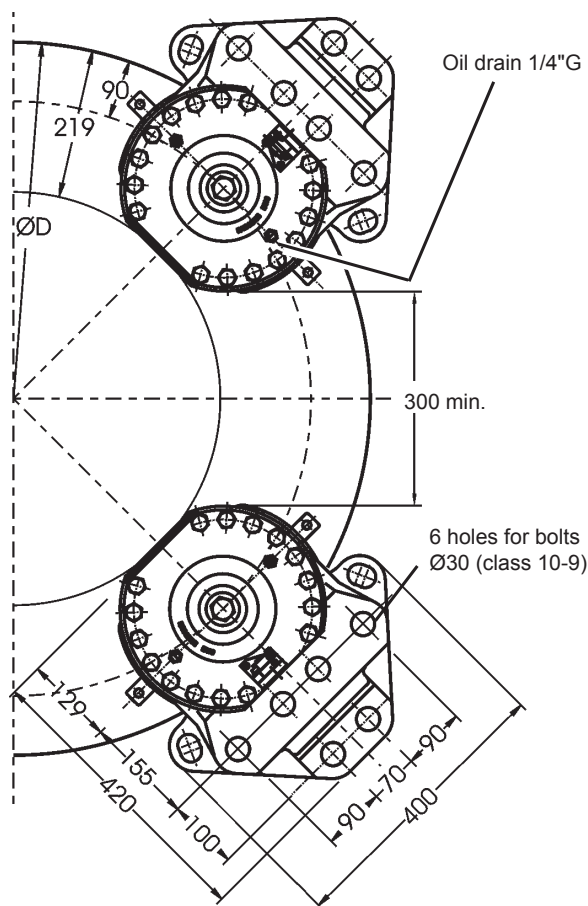
- Ambient temperature: -10°C to +60°C
- Relative humidity: ≤ 70%
- Dust in atmosphere ≥ 65μ
- Other conditions: consult us.

Use:

- The brake should be applied only in case of emergency stop, overspeed or shutdown of electric mains.
- Other use, consult us.

Options:

- Lining wear control switch
- Progressive braking system
- Marine protection
- Caliper on support with integral hydraulic power unit



Due to continuous development and improvement, all dimensions and characteristics are subject to change without notice.

Installation and maintenance Leaflet No. M08455-01
Spare parts No. S09455-01
Connection of a hydraulic power unit No. G08555-01

01/10/10 1/3

T03905-01-B

Disc brake

Technical data and dimensions

Caliper SH15

Opening proving switch :

250VAC maxi., 5A maxi.,
with interrupting capacity: 50VA maxi.

220VDC maxi., 5A maxi.,
with interrupting capacity: 50W maxi.

Compatible with PLC
(Programmable Logic Controllers).
An opening switch used with other equipment than PLC must
not be reused with a PLC.

Weight: 250kg
Torque and effort values are subject to a variation of $\pm 10\%$
Response time at nominal torque : see the leaflet
"Connection of a hydraulic power unit" quoted below



| Designation | Caliper | | SH15-3 | | SH15-2 | | SH15-1 | |
|---|----------|-----------------|---|-----------|-----------|-----------|-----------|-----------|
| | Lining * | | US2-1 | US2-4 | US2-1 | US2-4 | US2-1 | US2-4 |
| Braking force BF for 1mm of air gap disc/ lining | Static | N | 133 000 | 99 000 | 110 000 | 80 000 | 90 000 | 66 000 |
| | Dynamic | N | 150 000 | 110 000 | 120 000 | 88 000 | 100 000 | 73 000 |
| Linear speed of the disc | | m/s | ≤ 10 | ≤ 50 | ≤ 10 | ≤ 50 | ≤ 10 | ≤ 50 |
| Dynamic braking torque BT (N.m) for 1 caliper and disc ØD | 1000 mm | N.m | 61 500 | 45 100 | 49 200 | 36 080 | 41 000 | 29 930 |
| | 1200 mm | N.m | 76 500 | 56 100 | 62 200 | 44 880 | 51 000 | 37 230 |
| | 1500 mm | N.m | 99 000 | 72 600 | 79 200 | 58 080 | 66 000 | 48 180 |
| | 2000 mm | N.m | 136 500 | 100 100 | 109 200 | 80 080 | 91 000 | 66 430 |
| BT for other ØD (mm) | | N.m | BT = BF (D/2000 - 0.09) | | | | | |
| Regulation pressure | minimum | bar | 150 | | 140 | | 110 | |
| | maximum | bar | 180 | | 160 | | 140 | |
| Setting pressure of limit valve of the hydraulic unit | | bar | 205 | | 205 | | 165 | |
| Total volume of oil displaced | | cm ³ | 85 for one stroke disc/lining (nominal wear and opening) | | | | | |

* **US2-1**: disc temperature during one braking $\leq 150^{\circ}\text{C}$

US2-4: disc temperature during one braking $\leq 600^{\circ}\text{C}$

US2-5: disc temperature during one braking $\leq 350^{\circ}\text{C}$, optional, consult us.

Due to continuous development and improvement, all dimensions and characteristics are subject to change without notice.

Installation and maintenance Leaflet No. M08455-01
Spare parts No. S09455-01
Connection of a hydraulic power unit No. G08555-01

01/10/10

2/3

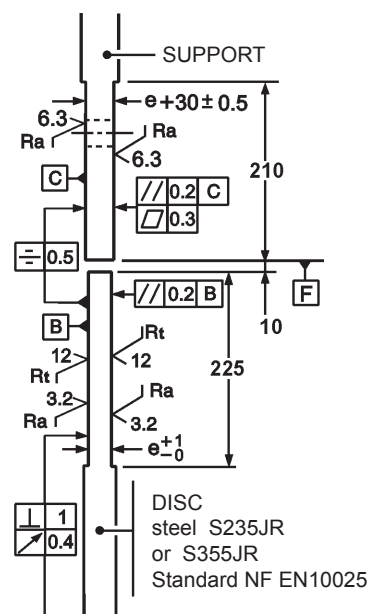
T03905-01-B

Disc brake

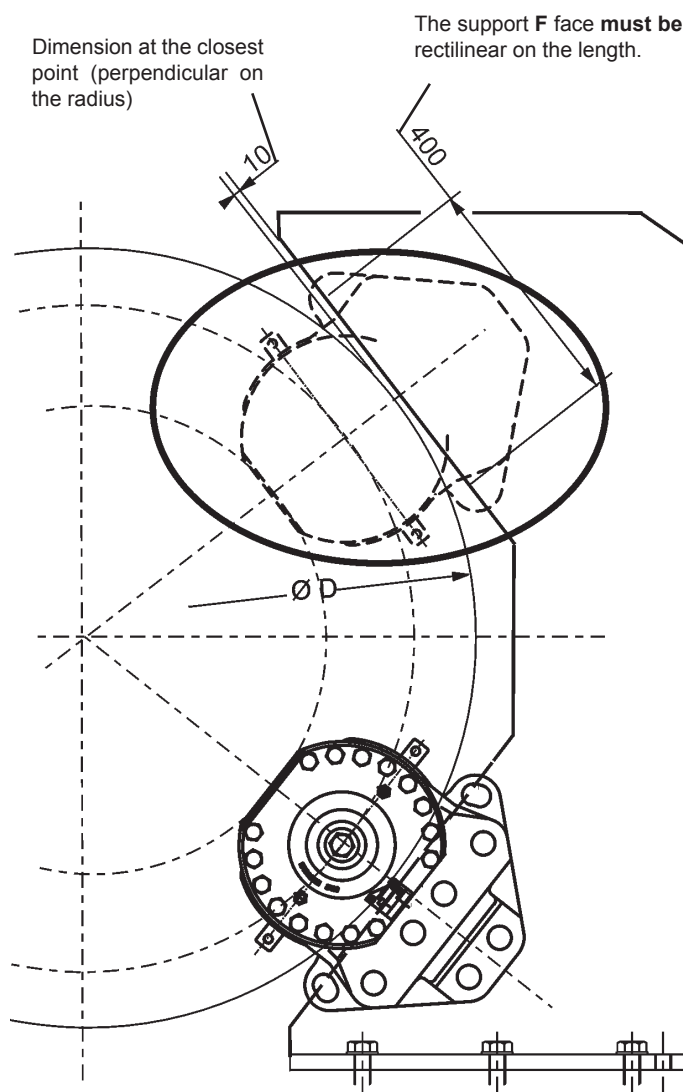
Technical data and dimensions

Disc and support for the caliper SH15

Installation instructions



Standard disc thickness: $30 \leq e \leq 50$ mm.
 Other thickness, consult us.



Due to continuous development and improvement, all dimensions and characteristics are subject to change without notice.