

## Disc brake

## Technical data and dimensions

## Caliper SHC15

Emergency brake  
 Fail safe  
 Spring application  
 Hydraulic release  
 Integral hydraulic power pack  
 Opening proving switches  
 Lining wear detector

**Operating conditions:**

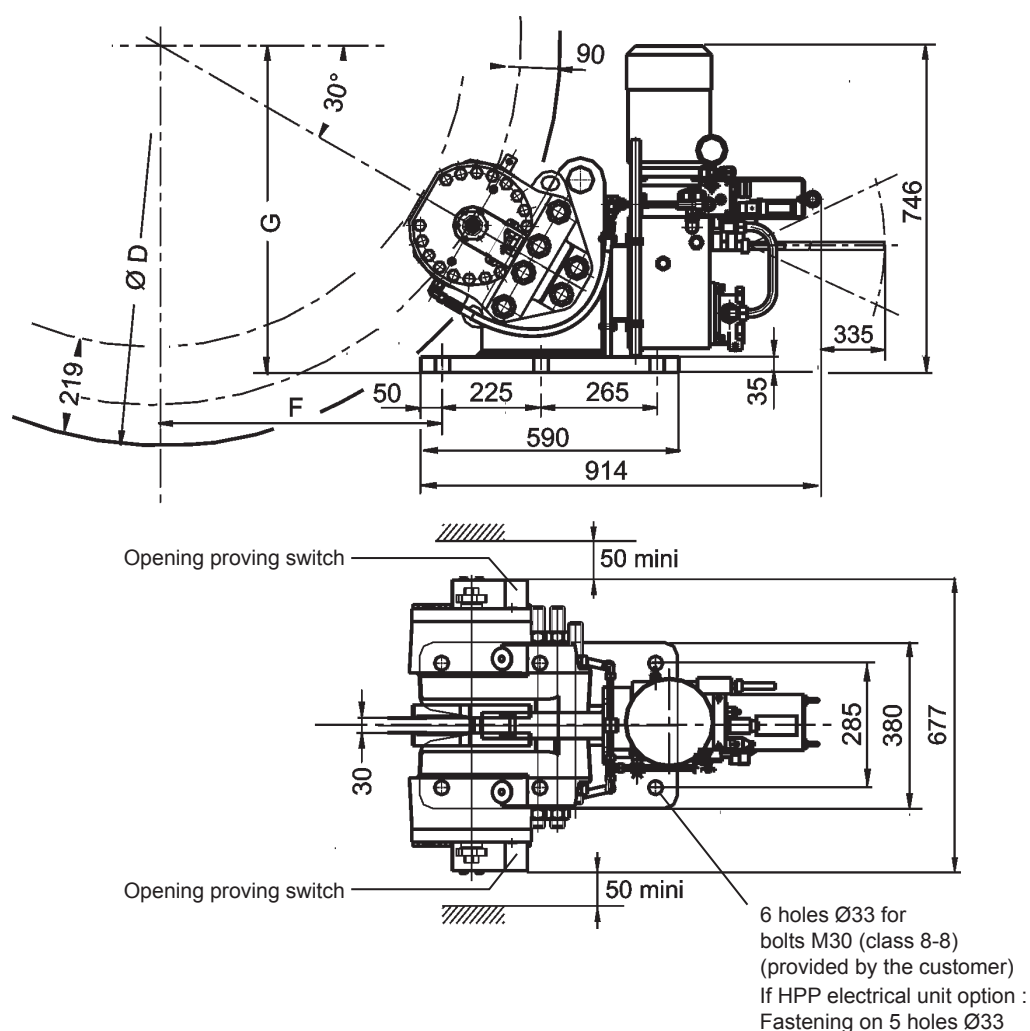
- Ambient temperature:  $-10^{\circ}\text{C}$  to  $+60^{\circ}\text{C}$
- Relative humidity:  $\leq 70\%$
- Dust in atmosphere  $\geq 65\mu$
- Other conditions: consult us.

**Use:**

- The brake should be applied only in case of emergency stop, overspeed or shutdown of electric mains.
- Other use, consult us.

**Options:**

- Lining wear control switch
- Progressive braking system
- Marine protection
- Electrical control unit



Due to continuous development and improvement, all dimensions and characteristics are subject to change without notice.

Installation and maintenance  
 Spare parts SH15  
 Spare parts CE8L

Leaflet No. M08456-01  
 No. S09455-01  
 No. S09580-01

Connection of a HPP

No. G08555-01

29/08/18

1/2

**T03906-03-C**

## Disc brake

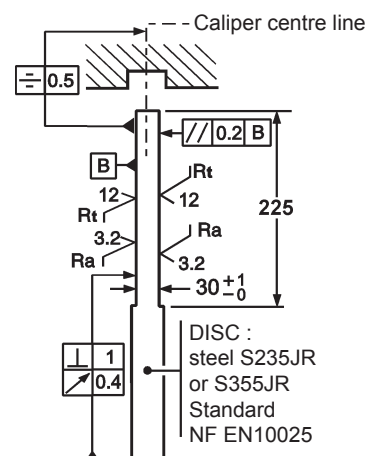
## Technical data and dimensions

## Caliper SHC15

## Electrical data

- Motor voltages :  
3 phases : 230/400VAC  $\pm 10\%$  50Hz  
2,2kW, 4 poles
- Options motor :  
690VAC  $\pm 10\%$  50Hz  
500VAC  $\pm 10\%$  50Hz  
230/400VAC  $\pm 10\%$  50Hz with PTC sensor  
Other voltage, consult us.
- Opening switch :  
250VAC maxi., 5A maxi.,  
with interrupting capacity: 50VA maxi.  
220VDC maxi., 5A maxi.,  
with interrupting capacity: 50W maxi.  
Compatible with PLC  
(Programmable Logic Controllers).  
An opening switch used with other equipment than PLC  
must not be reused with a PLC.

## Installation instructions



Disc standard thickness: 30 mm.  
Other thickness, consult us

Weight: 360kg

Torque and effort values are subject to a variation of  $\pm 10\%$

Response time at nominal torque : see the leaflet "Connection of a hydraulic power pack" quoted below.

Designation	Caliper		SHC15-3		SHC15-2		SHC15-1	
	Lining*		US2-1	US2-4	US2-1	US2-4	US2-1	US2-4
Braking Force BF or 1mm of air gap disc/lining	Static	N	133 000	99 000	110 000	80 000	90 000	66 000
	Dynamic	N	150 000	110 000	120 000	88 000	100 000	73 000
Linear speed of the disc	m/s		$\leq 10$	$\leq 50$	$\leq 10$	$\leq 50$	$\leq 10$	$\leq 50$
Dynamic braking torque BT (N.m) for 1 caliper and a disc ØD (mm)	1000 mm	N.m	61 500	45 100	49 200	36 080	41 000	29 930
	1200 mm	N.m	76 500	56 100	62 200	44 880	51 000	37 230
	1500 mm	N.m	99 000	72 600	79 200	58 080	66 000	48 180
	2000 mm	N.m	136 500	100 100	109 200	80 080	91 000	66 430
BT for other ØD (mm)	N.m		BT = BF (D/2000 - 0.09)					
F	mm		F = (0.433 x D) - 154.2					
G	mm		G = (0.250 x D) + 286.2					
Setting pressure of limit valve of the hydraulic power pack	bar		205		205		165	

\* **US2-1** : disc temperature during one braking  $\leq 150^\circ\text{C}$

**US2-4** : disc temperature during one braking  $\leq 600^\circ\text{C}$

**US2-5** : disc temperature during one braking  $\leq 350^\circ\text{C}$ , optional, consult us.

Due to continuous development and improvement, all dimensions and characteristics are subject to change without notice.

Installation and maintenance	Leaflet No. M08456-01	Connection of a HPP	No. G08555-01	29/08/18	2/2
Spare parts SH15	No. S09455-01				
Spare parts CE8L	No. S09580-01				
<b>T03906-03-C</b>					