

Disc brake

Technical data and dimensions

Caliper SH18B

Emergency brake
Fail safe
Spring application
Hydraulic release
Opening proving switches
Lining wear detector

Operating conditions:

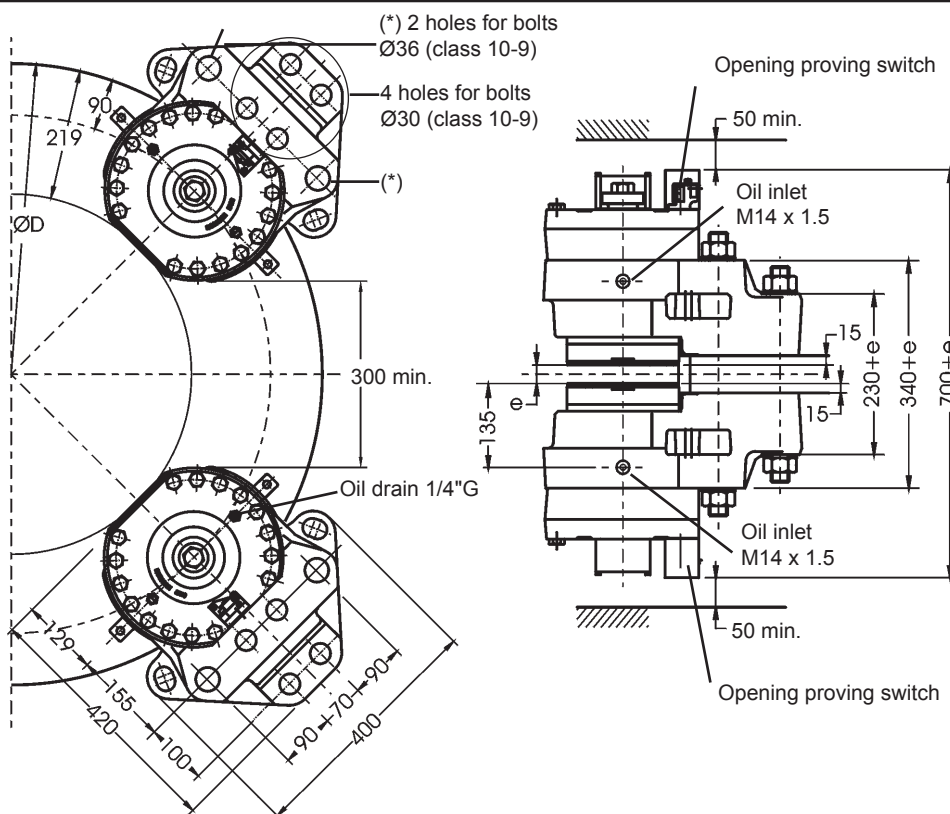
- Ambient temperature: -10°C to +60°C
- Relative humidity: ≤ 70%
- Dust in atmosphere ≥ 65µ
- Other conditions: consult us.

Use:

- The brake should be applied only in case of emergency stop, overspeed or shutdown of electric mains. Other use, consult us.

Options:

- Lining wear control switch
- Progressive braking system
- Marine protection
- Caliper on support with integral hydraulic power unit



Weight: 270kg

Torque and effort values are subject to a variation of ±10%

Response time at nominal torque : see the leaflet "Connection of a hydraulic power unit" quoted below

Designation	Caliper		SH18B	
	Lining*		US2-1	US2-4
Braking force BF for 1mm of air gap disc/lining	Static N		160 000	117 400
	Dynamic N		180 000	130 500
Linear speed of the disc	m/s		≤ 10	≤ 50
Dynamic braking torque BT (N.m) for 1 caliper and disc ØD (mm)	1000 mm		73 800	53 500
	1200 mm		91 800	66 500
	1500 mm		118 800	86 100
	2000 mm		163 800	118 700
BT for other ØD (mm)	N.m	BT = BF (D/2000 - 0.09)		
Regulation pressure: mini.	bar		180	
	maxi.		200	
Setting pressure limit valve of hydr. unit	bar		225	
Total volume of oil displaced	cm ³		85 for one stroke disc/lining (nominal wear and opening)	

Opening proving switch :

250VAC maxi., 5A maxi., with interrupting capacity: 50VA maxi.

220VDC maxi., 5A maxi., with interrupting capacity: 50W maxi.

Compatible with PLC (Programmable Logic Controllers).
An opening switch used with other equipment than PLC must not be reused with a PLC.

* US2-1: disc temperature during one braking ≤ 150°C

US2-4: disc temperature during one braking ≤ 600°C

US2-5: disc temperature during one braking ≤ 350°C, optional, consult us.

Due to continuous development and improvement, all dimensions and characteristics are subject to change without notice.

Installation and maintenance Leaflet No. M08457-01
Spare parts No. S09457-01
Connection of a hydraulic power unit No. G08555-01

08/10/10

1/2

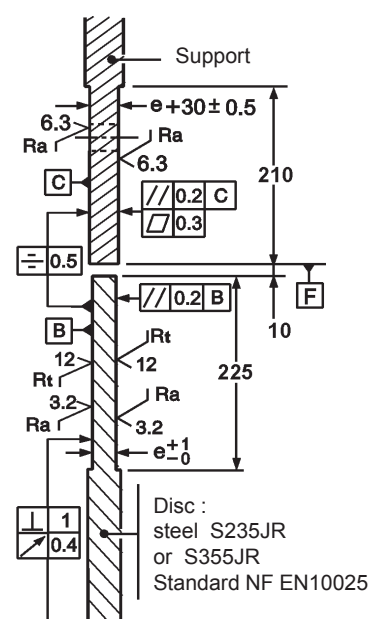
T03907-01-B

Disc brake

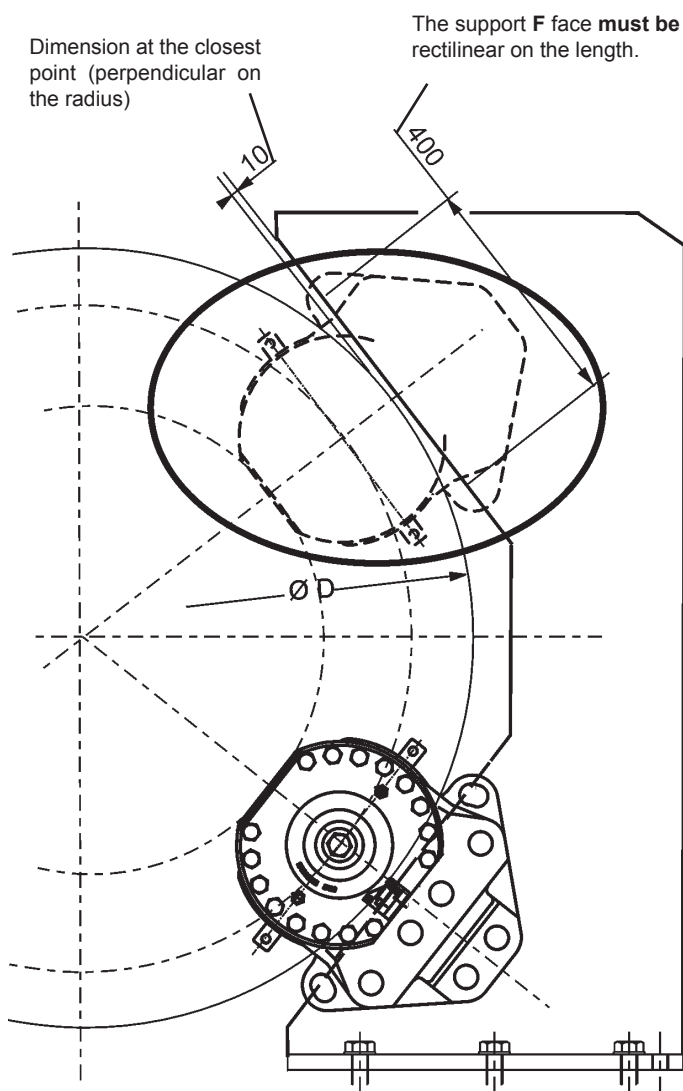
Technical data and dimensions

Disc and support for the caliper SH18B

Installation instructions:



Standard disc thickness: $30 \leq e \leq 50$ mm.
 Other thickness, consult us.



Due to continuous development and improvement, all dimensions and characteristics are subject to change without notice.

Installation and maintenance Leaflet No. M08457-01
 Spare parts No. S09457-01
 Connection of a hydraulic power unit No. G08555-01

08/10/10

2/2

T03907-01-B