

Disc brake

Technical data and dimensions

Caliper SH25

Emergency brake
Fail safe
Spring application
Hydraulic release
Opening proving switches
Lining wear detector

Operating conditions:

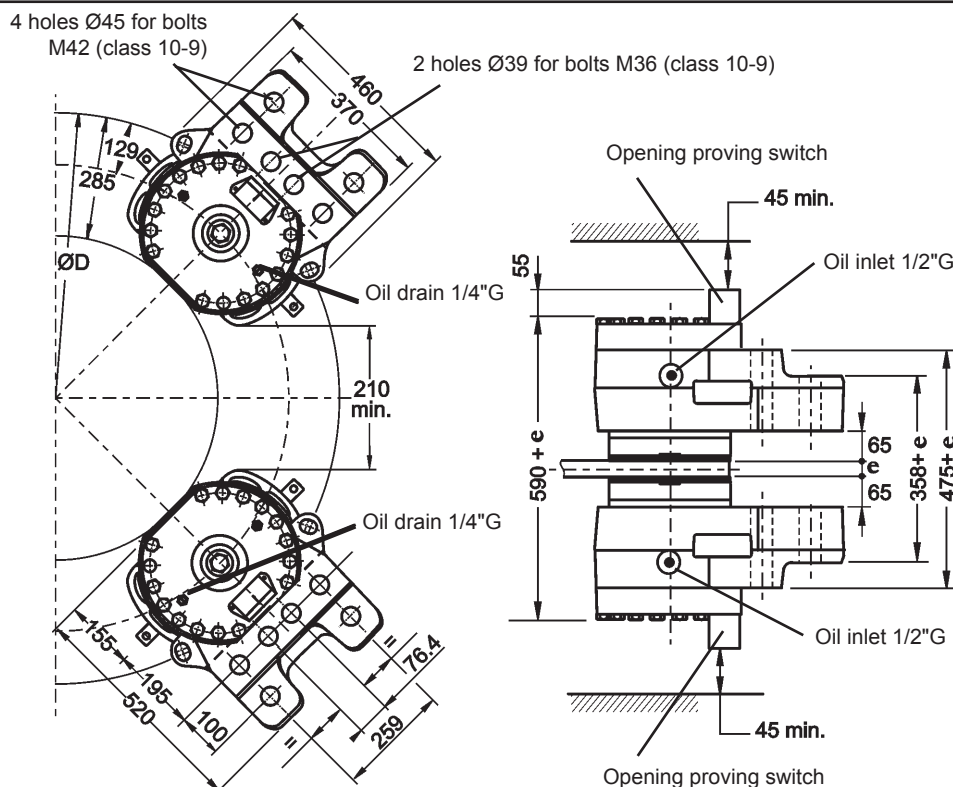
- Ambient temperature: -10°C to +60°C
- Relative humidity: ≤ 70%
- Dust in atmosphere ≥ 65µ
- Other conditions: consult us.

Use:

- The brake should be applied only in case of emergency stop, overspeed or shutdown of electric mains.
- Other use, consult us.

Options:

- Lining wear control switch
- Progressive braking system
- Marine protection
- Caliper on support with integral hydraulic power unit



Opening proving switch :

250VAC maxi., 5A maxi.,
with interrupting capacity:
50VA maxi.

220VDC maxi., 5A maxi.,
with interrupting capacity:
50W maxi.

Compatible with PLC
(Programmable Logic
Controllers).
An opening switch used with
other equipment than PLC must
not be reused with a PLC.

Standard disc
thickness :
30 ≤ e ≤ 50 mm.
Other thickness,
consult us.

Designation	Caliper		SH25-2		SH25-1	
	Lining *		US2-1	US2-4	US2-1	US2-4
Braking force BF for 1mm of air gap disc/lining	Static N	N	225 000	165 000	160 000	120 000
	Dynamic N	N	250 000	184 000	180 000	134 000
Linear speed of the disc		m/s	≤ 10	≤ 50	≤ 10	≤ 50
Dynamic braking torque BT (N.m) for 1 caliper and disc ØD (mm)	1500 mm	N.m	155 250	114 260	111 780	83 210
	2000 mm	N.m	217 750	160 260	156 780	116 710
	2500 mm	N.m	280 250	206 260	201 780	150 210
	3000 mm	N.m	342 750	252 260	246 780	183 710
BT for other ØD (mm)		N.m	BT = BF (D/2000 - 0,129)			
Regulation pressure	minimum	bar	180		140	
	maximum	bar	200		160	
Setting pressure limit valve of hydraul. Unit		bar	225		205	
Total volume of oil displaced		cm³	140 for one stroke disc/lining (nominal wear and opening)			

Weight : 440kg
Torque and effort values are subject to
a variation of ±10%
Response time at nominal torque : see
the leaflet "Connection of a hydraulic
power unit" quoted below

- * US2-1: disc temperature during
one braking ≤ 150°C
US2-4: disc temperature during
one braking ≤ 600°C
US2-5: disc temperature during
one braking ≤ 350°C,
optional, consult us.

Due to continuous development and improvement, all dimensions and characteristics are subject to change without notice.

Installation and maintenance Leaflet No. M08465-01
Spare parts No. S09465-01
Connection of a hydraulic power unit No. G08555-01

21/10/10 1/2

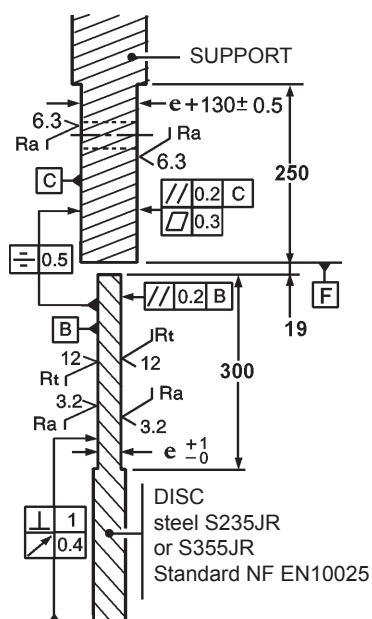
T03915-01-B

Disc brake

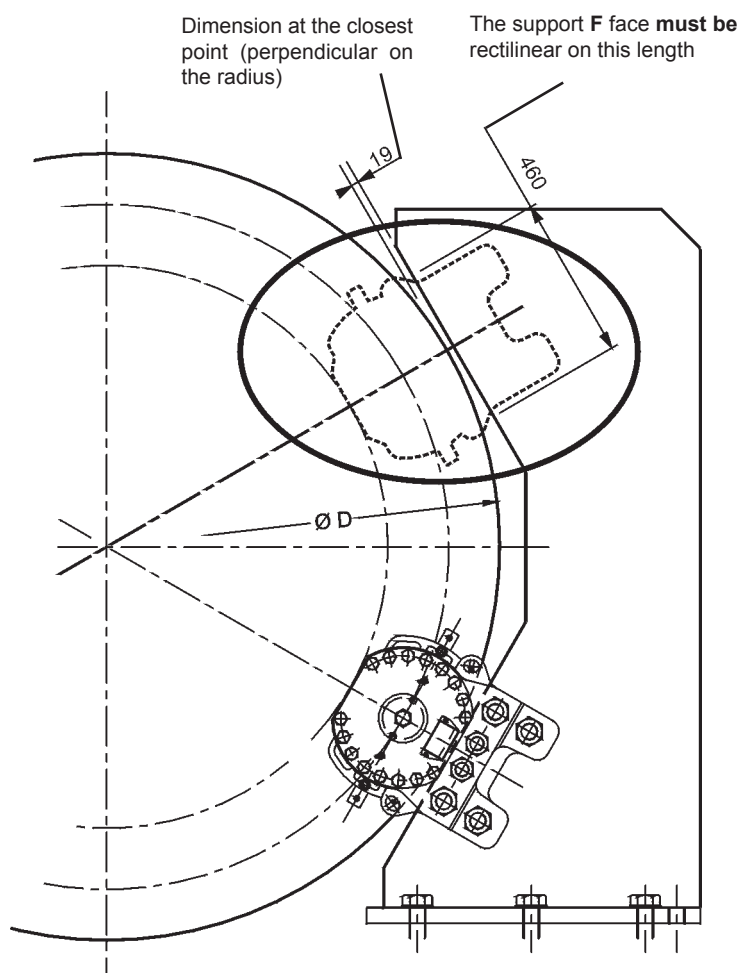
Technical data and dimensions

Disc and support for the caliper SH25

Installation instructions



Standard disc thickness: $30 \leq e \leq 50$ mm.
 Other thickness, consult us.



Due to continuous development and improvement, all dimensions and characteristics are subject to change without notice.

Installation and maintenance Leaflet No. M08465-01
 Spare parts No. S09465-01
 Connection of a hydraulic power unit No. G08555-01

21/10/10

2/2

T03915-01-B