

Disc brake

Technical data and dimensions

Caliper SHC25

Emergency brake
Fail safe
Spring application
Hydraulic release
Integral hydraulic power unit
Opening proving switches
Lining wear detector

Operating conditions:

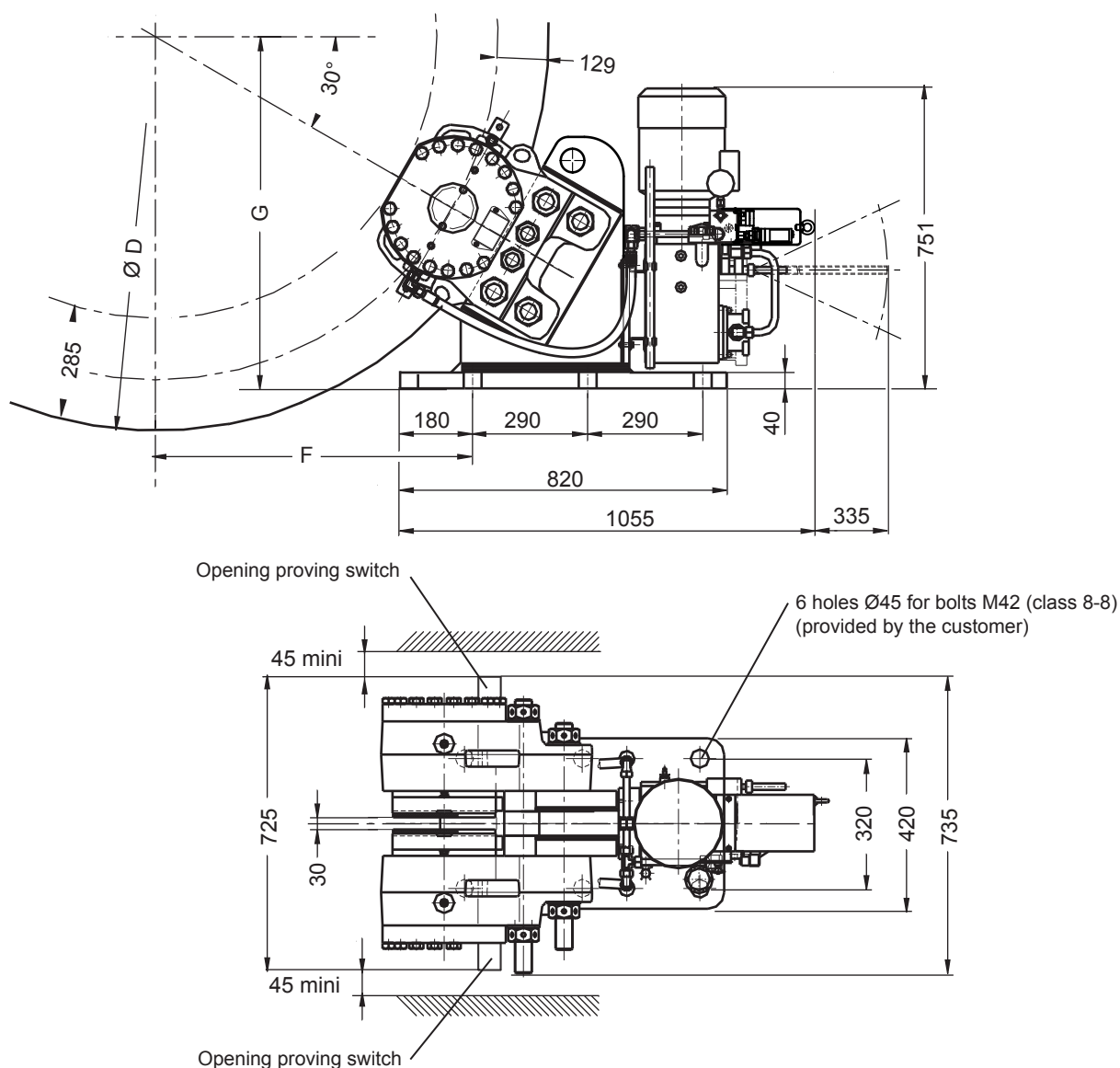
- Ambient temperature: -10°C to +60°C
- Relative humidity: ≤ 70%
- Dust in atmosphere ≥ 65µ
- Other conditions: consult us.

Use:

- The brake should be applied only in case of emergency stop, overspeed or shutdown of electric mains.
- Other use, consult us.

Options:

- Lining wear control switch
- Progressive braking system
- Marine protection
- Self contained electric system



Due to continuous development and improvement, all dimensions and characteristics are subject to change without notice

Installation and maintenance
Spare parts SH25
Spare parts CE8L

Leaflet No. M08466-02
No. S09465-01
No. S09580-01

Connection of a hydraulic power unit

No. G08555-01

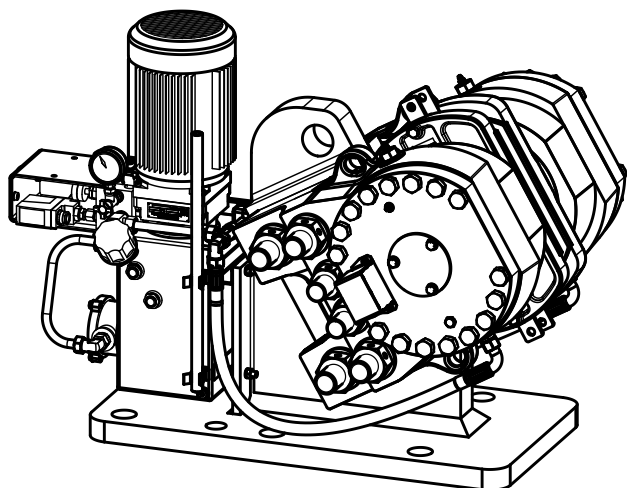
20/10/10

T03916-02-C

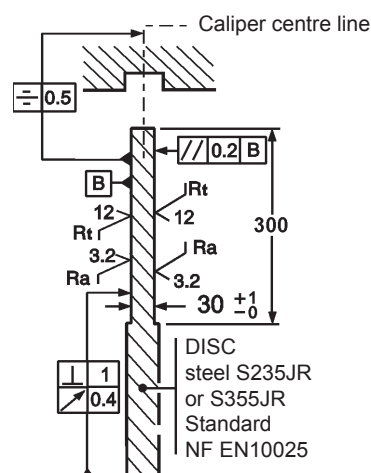
Disc brake

Technical data and dimensions

Caliper SHC25



Installation instructions



Disc standard thickness: 30 mm.
 Other thickness, consult us

Weight: 770 kg

Torque and effort values are subject to a variation of $\pm 10\%$

Response time at nominal torque : see the leaflet "Connection of a hydraulic power unit" quoted below.

Designation	Caliper		SHC25-2		SHC25-1	
	Lining *		US2-1	US2-4	US2-1	US2-4
Braking force BF for 1mm of air gap disc/lining	Static	N	225 000	165 000	160 000	120 000
	Dynamic	N	250 000	184 000	180 000	134 000
Linear speed of the disc		m/s	≤ 10	≤ 50	≤ 10	≤ 50
Dynamic braking torque BF (N.m) for 1 caliper and a disc ØD (mm)	1500 mm	N.m	155 250	114 260	111 780	83 210
	2000 mm	N.m	217 750	160 260	156 780	116 710
	2500 mm	N.m	280 250	206 260	201 780	150 210
	3000 mm	N.m	342 750	252 260	246 780	183 710
BT for other ØD (mm)		N.m	BT = BF (D/2000 - 0,129)			
F		mm	F = (0,433 x D) - 62			
G		mm	G = (0,250 x D) + 390			
Maximum setting pressure limit valve of hydraulic power unit		bar	225		205	

* **US2-1** : disc temperature during one braking $\leq 150^\circ\text{C}$

US2-4 : disc temperature during one braking $\leq 600^\circ\text{C}$

US2-5 : disc temperature during one braking $\leq 350^\circ\text{C}$, optional, consult us.

Electrical data

• Motor voltages :

3 phases : 230/400VAC $\pm 10\%$ 50Hz
 2,2kW, 4 poles

• Options motor :

690VAC $\pm 10\%$ 50Hz
 500VAC $\pm 10\%$ 50Hz
 230/400VAC $\pm 10\%$ 50Hz with PTC sensor

Other voltage, consult us.

• Opening switch :

250VAC maxi., 5A maxi.,
 with interrupting capacity: 50VA maxi.
 220VDC maxi., 5A maxi.,
 with interrupting capacity: 50W maxi.

Compatible with PLC
 (Programmable Logic Controllers).
 An opening switch used with other equipment than PLC must not be reused with a PLC.

Due to continuous development and improvement, all dimensions and characteristics are subject to change without notice

Installation and maintenance
 Spare parts SH25
 Spare parts CE8L

Leaflet No. M08466-02
 No. S09465-01
 No. S09580-01

Connection of a hydraulic power unit

No. G08555-01

20/10/10

T03916-02-C